



Welcome session for 1st Course students at ETSEIB

Bachelor's degree in Industrial Technologies and Economic Analysis

Amaia Lusa, *Director of ETSEIB*

Arnau Dòria, *Sotsdirector d'Estudiantat, Promoció i Projectes de Centre*

Joaquim Minguella, *Director-coordinator of the bachelor's degree*

Marga Anglada, *Librarian head of services*



Monday, 8th September 2025 | Aula Capella

Welcome! (2nd time)



Prof. Amaia Lusa
Director of ETSEIB
directora.etsuib@upc.edu

Prof. Arnau Dòria
Sotsdir. d'Estudiantat,
Promoció i Projectes de Centre
arnau.doria@upc.edu

Prof. Joaquim Minguella
Director-coordinator of the
bachelor's degree
joaquim.minguella@upc.edu

Mrs. Marga Anglada
Librarian head of services
margarita.anglada@upc.edu

Session development

First Part

~45 min

- **Presentations**

- Introduction and welcome to ETSEIB
- Bachelor's degree functioning and important information
- Student support and other important assets
- ETSEIB Library
- Student associations

Already covered
last week, but
ask questions if
you have any!

Second Part

~15 min (and +)

- Time for **Questions and Answers**

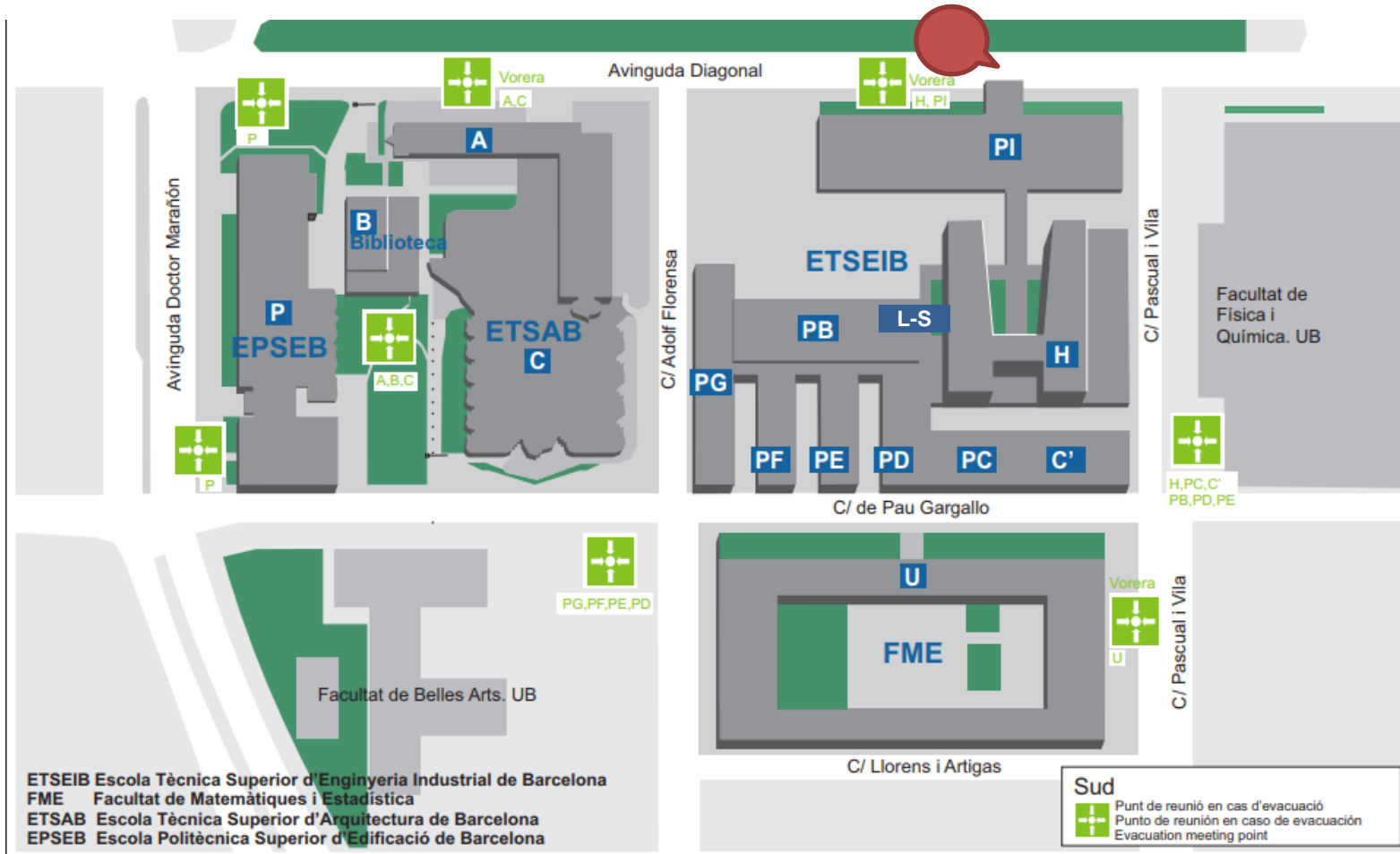
**Bachelor's degree in
Industrial Technologies and Economic Analysis**

Key aspects to remember from today's session: (START BY THE END)

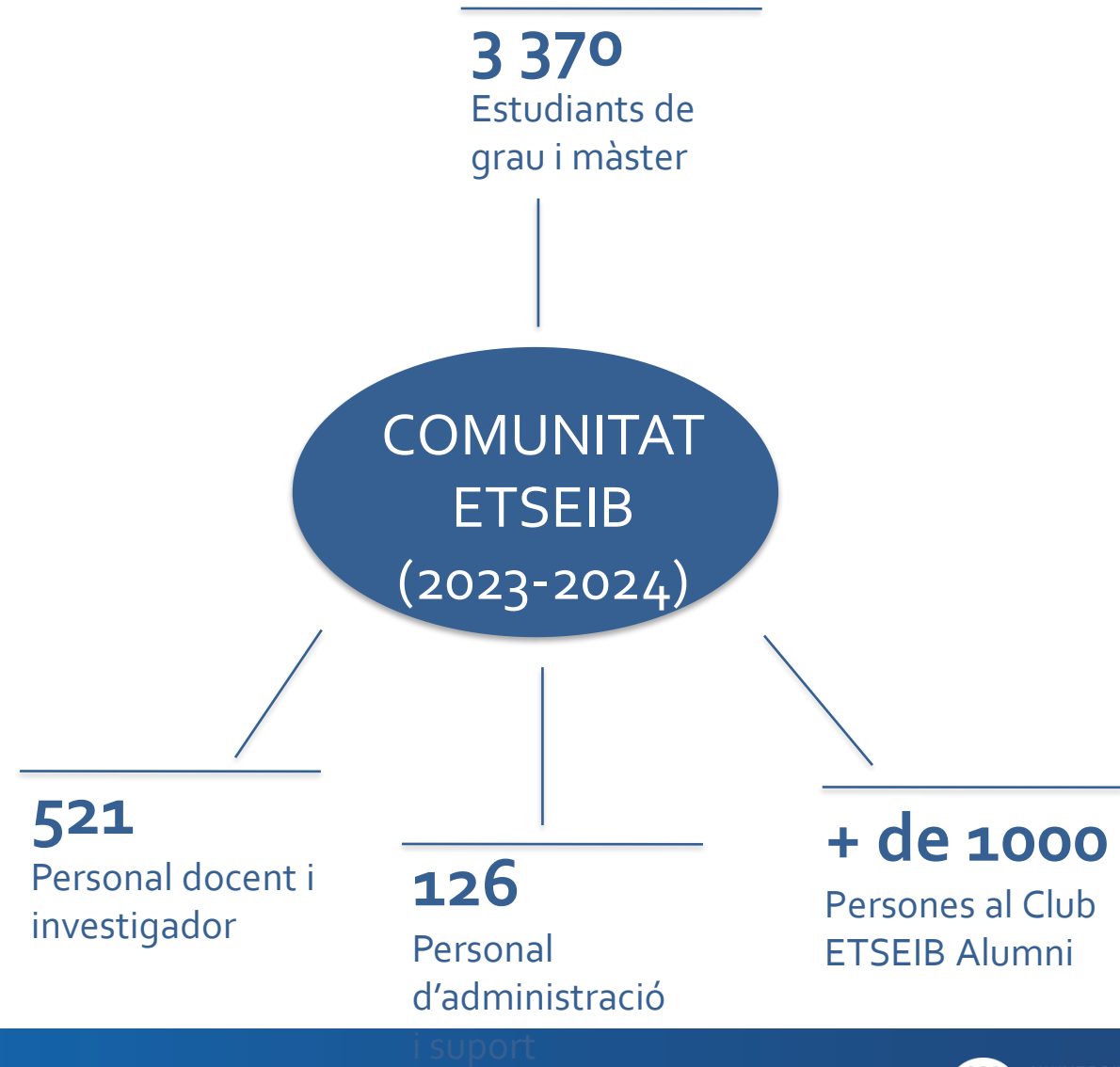
1. ETSEIB is a **big school that will open you many doors**.
2. There is an **Initial Phase** (total of 60 ECTS) that grants permanence.
3. **First term** is “soft landing” at ETSEIB. **Second term** UPC & UPF.
4. **UPC-ETSEIB** is the **coordinating entity** and holds your files (relevant for mobility and internships).
5. Check “each” **day-to-day information** at “each” university.
6. University is not only teaching and exams: **Come and live it!**

Congratulations for being here. Now this is for real.

Welcome Session (8th September 2025, 10:15 am)
Bachelor's degree in Industrial Technologies and Economic Analysis (UPC-UPF)



The main entrance is here







Enginyeria Industrial a l'ETSEIB

Programa Acadèmic de Recorregut Successiu

Industrial Technologies and
Economic Analysis (UPC-UPF)



Màster en Enginyeria
Industrial

4 anys
=
240
ECTS

30
ECTS

30
ECTS

30
ECTS

30
ECTS

30
ECTS

30
ECTS

30
ECTS

18
ECTS

TFG
12ECTS

Sense atribucions

2 anys
=
120
ECTS

30
ECTS

30
ECTS

30
ECTS

18
ECTS

TFM
12ECTS

Atribucions
d'enginyeria superior



Màsters Universitaris de
l'àmbit de l'economia

Bachelor's degree in Industrial Technologies and Economic Analysis - 2025

Seats offered	50
1st Preference	197 (+53)
Ratio demand:offer in 1 st preference [%]	394% (+106 points %)
2 nd -8 th Preferences	421 (+95)
Ratio demand:offer in 2 nd -8 th preferences [%]	842% (+190 points %)
Admitted students	53 general 2 other (sports, etc.)
Gender equity	[16] 30% f (current 42%) [39] 70% m
Cutting mark	12.540 / 14 (+0,290)

Comparison of the Cutting mark with other public bachelor degrees

5th bachelor's degree in UPC out of 71 (up 1 position)

2nd bachelor's degree in UPF out of 52 (up 3 positions)

14th bachelor's degree in Catalonia out of 556 (up 12 positions, Top 2.5%)

Himalayas



Bachelor's Thesis presentation



Welcome session

Bachelor's degree in Industrial Technologies and Economic Analysis

ECTS load of
the degree:

Mandatory	Elective	Final Thesis	TOTAL
216	12	12	240



Term 1
(autumn) Term 2
(spring)

1st year

INITIAL PHASE

Term 3
(autumn) Term 4
(spring)

2nd year

Term 5
(autumn) Term 6
(spring)

3rd year

Term 7
(autumn) Term 8
(spring)

4th year

NON-INITIAL PHASE

Bachelor's degree in Industrial Technologies and Economic Analysis

Initial Phase: Group of subjects in the first year (terms 1 and 2) = 60 ECTS

Term 1 (Autumn)			Term 2 (Spring)		
Calculus I	UPC	6 ECTS	Calculus II	UPC	6 ECTS
Physics I	UPC	6 ECTS	Physics II	UPC	6 ECTS
Algebra and geometry	UPC	6 ECTS	Introduction to Economics	UPF	6 ECTS
Chemistry	UPC	6 ECTS	Introduction to Game Theory	UPF	6 ECTS
Programming	UPC	6 ECTS	Probability and Statistics	UPF	6 ECTS



It is not possible to register for second year subjects until the completion of the Initial Phase.

Bachelor's degree in Industrial Technologies and Economic Analysis

Initial Phase: Group of subjects in the first year (terms 1 and 2) = 60 ECTS

The Initial Phase is completed when:

- All subjects (60 ECTS) are qualified with a mark of 5 or more, or
- All subjects (60 ECTS) are qualified with a mark of 5 or more, except for a maximum of two them; which must have a mark of 4.0 or more and must accomplish: $N1 + N2 \geq 8.9$
(example: two subjects marked with a 4.3 and a 4.6)
And the average mark is ≥ 5

Under any of these conditions, the Initial Phase is considered completed and the student can register for the subjects in the second course.

Bachelor's degree in Industrial Technologies and Economic Analysis

Initial Phase: Group of subjects in the first year (terms 1 and 2) = 60 ECTS

The Initial Phase is terminated when:

- The student fails to pass a minimum of 12 ECTS during the first academic year (2 terms),
or
- The Initial Phase (total of 60 ECTS) is not completed in the period of 2 academic years (4 terms).

If the Initial Phase is terminated, the student cannot continue the courses of the Bachelor's degree in Industrial Technologies and Economic Analysis.

Subjects' evaluation:

Each subject has its own evaluation system, defined in its subject file.

Common evaluation items are:

- Interim (Midterm) examination
- Final examination
- Other Continuous evaluation items (Problems, etc.)

Sistema de qualificació

The overall course grade is calculated as:

$$\text{Grade} = \max(\text{Grade_A}, \text{Grade_B})$$

with

$$\text{Grade_A} = 0.30 \text{ Probs} + 0.30 \text{ Test} + 0.20 \text{ Lab} + 0.20 \text{ Midterm}$$

$$\text{Grade_B} = 0.40 \text{ Probs} + 0.40 \text{ Test} + 0.20 \text{ Lab}$$

where,

Grade: Final grade of the course.

Probs: Mark obtained in the problems exam.

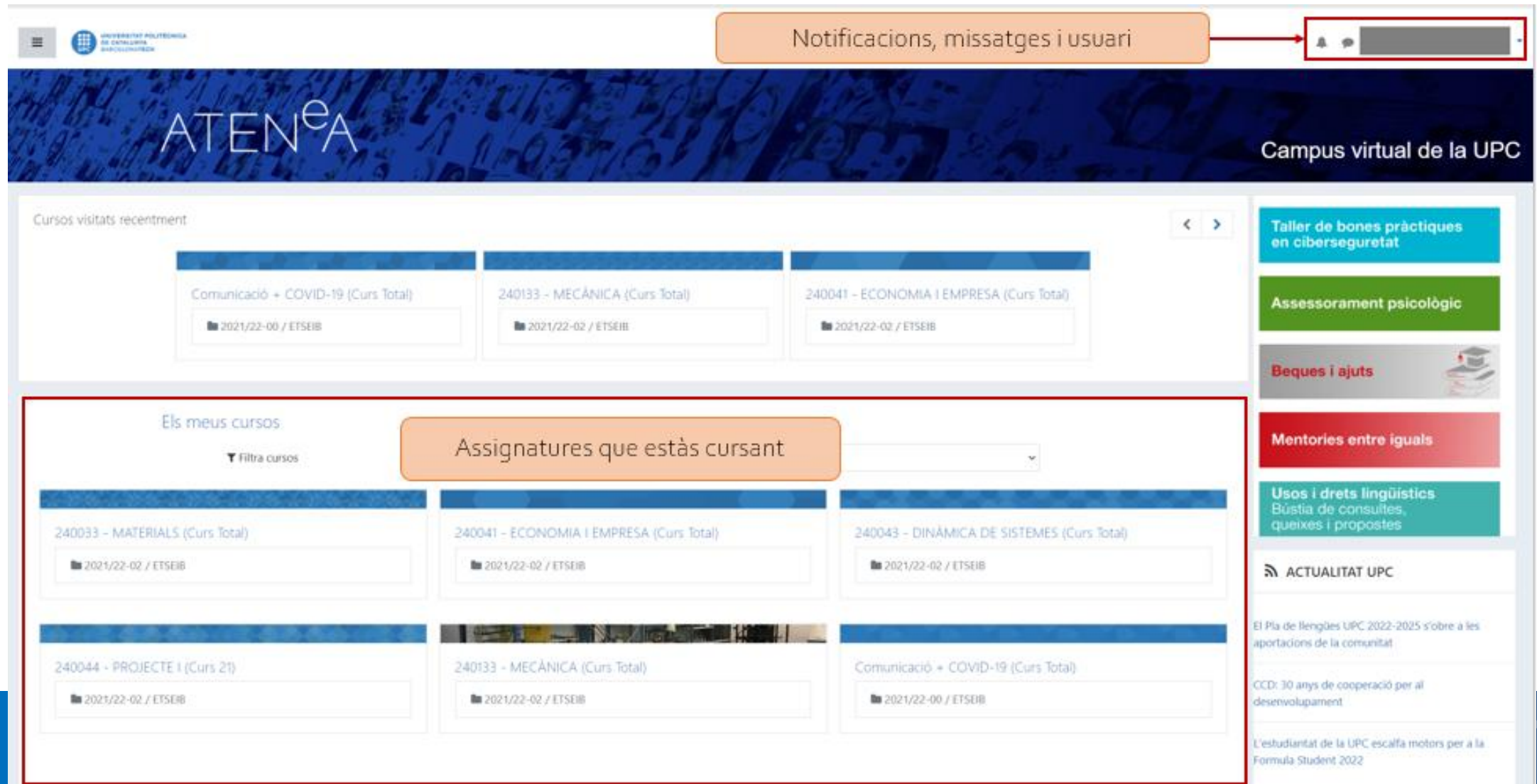
Test : Mark obtained in the test exam.

Lab: Average mark of the laboratory reports delivered at the end of each lab session.

Midterm: Mark obtained in the midterm exam.

**There is also a Resit examination that can be taken during the first weeks of July.
Important! To be able to sit a Resit, it is necessary that you register for it (in February).**

Atenea: The virtual Campus at UPC



The screenshot displays the Atenea virtual campus interface. At the top, a navigation bar includes the UPC logo, a menu icon, and a notification area labeled "Notificacions, missatges i usuari" with a bell icon and a search bar. Below this is a blue header with the "ATENEA" logo and the text "Campus virtual de la UPC".

The main content area is divided into two primary sections. The top section, "Cursos visitats recentment", shows three course cards: "Comunicació + COVID-19 (Curs Total)", "240133 - MECÀNICA (Curs Total)", and "240041 - ECONOMIA I EMPRESA (Curs Total)". The bottom section, "Els meus cursos", is titled "Assignatures que estàs cursant" and features a "Filtre cursos" dropdown. It displays six course cards in a grid: "240033 - MATERIALS (Curs Total)", "240041 - ECONOMIA I EMPRESA (Curs Total)", "240043 - DINÀMICA DE SISTEMES (Curs Total)", "240044 - PROJECTE I (Curs 21)", "240133 - MECÀNICA (Curs Total)", and "Comunicació + COVID-19 (Curs Total)".

A right-hand sidebar contains several service tiles: "Taller de bones pràctiques en ciberseguretat", "Assessorament psicològic", "Beques i ajuts", "Mentories entre iguals", and "Usos i drets lingüístics". Below these is an "ACTUALITAT UPC" section with news items about the UPC 2022-2025 language plan, the 30th anniversary of the CCD, and the Formula Student 2022 competition.

Welcome Session (8th September 2025, 10:15 am)

Bachelor's degree in Industrial Technologies and Economic Analysis (UPC-UPF)

UPC start q1

UPC start q2

2025

2026

ANY	MES	DL	DT	DC	DJ	DV
2025	JULIOL		1	2	3	4
	"	7	8	9	10	11
	"	14	15	16	17	18
	"	21	22	23	24	25
	"	28	29	30	31	
	AGOST					
	SETEMBRE	1	2	3	4	5
	"	8 A	9 A	10 A	11	12 A
	"	15 B	16 B	17 B	18 B	19 B
	"	22 A	23 A	24	25 A	26 A
	OCTUBRE	29 B	30 B	1 B	2 B	3 B
	"	6 A	7 A	8 A	9 A	10 A
	"	13 B	14 B	15 B	16 B	17 B
	"	20 A	21 A	22 A	23 A	24 A
	"	27	28	29	30	31
	NOVEMBRE	3 B	4 B	5 B	6 B	7 B
	"	10 A	11 A	12 A	13 A	14 A
	"	17 B	18 B	19 B	20 B	21 B
	"	24 A	25 A	26 A	27 A	28 A
	DESEMBRE	1 B	2 B	3 B	4 B	5 B
	"	8	9 A	10 A	11 A	12 A
	"	15 B	16 B	17 B	18 B	19 B
	"	22	23	24	25	26
	2026	GENER	29	30	31	1
"		5	6	7	8	9
"		12	13	14	15	16
"		19	20	21	22	23
"		26	27	28 QF	29	30
FEBRER		2 AC	3	4	5	6
"		9	10	11	12 A	13 A
"		16 B	17 B	18 B	19 B	20 B
"		23 A	24 A	25 A	26 A	27 A
MARÇ		2 B	3 B	4 B	5 B	6 B
"		9 A	10 A	11 A	12 A	13 A
"		16 B	17 B	18 B	19 B	20 B
"		23 A	24 A	25 A	26 A	27 A
"		30	31	1	2	3
ABRIL		6	7	8	9	10
"		13	14 B	15 B	16 B	17 B
"		20 A	21 A	22 A	23 A	24 A
"		27 B	28 B	29 B	30 B	1
MAIG		4 A	5 A	6 A	7 A	8 A
"		11 B	12 B	13 B	14 B	15 B
"		18 A	19 A	20 A	21 A	22 A
"		25	26 A	27 A	28 A	29 A
JUNY		1 B	2	3	4	5
"		8	9	10	11	12
"	15	16	17	18	19	
"	22	23	24	25	26	
JULIOL	29	30	1	2	3	
"	6	7	8	9 QF	10	
"	13	14 AC	15	16	17	

(!) UPF works on a different calendar

- Welcome → 9th February
- t3 start → 23rd March

(!) And 9th Feb → 18th March: Enterprise Challenges

Classe
*Avaluació
*Recuperació
Recuperació tercer trimestre/anual
Data límit de tancament de les actes de qualificacions
Festiu
No lectius
Vacances

Mar/Mar/Mar							Abr/Abr/Apr							Mai/May/May						
DI	Dt	Dc	Dj	Dv	Ds	Dg	DI	Dt	Dc	Dj	Dv	Ds	Dg	DI	Dt	Dc	Di	Dv	Ds	Dg
						1			1	2	3	4	5					1	2	3
						8	6		8		10		12	4		6		8	9	10
		11	12	13	14	15	13		15		17		19	11		13		15	16	17
17	18	19	20	21	22	23	20		22		24		26	18		20		22	23	24
23		25		27	28	29	27		29					25		27		29	30	31
30	31																			
Jun/Jun/Jun							Jul/Jul/Jul													
DI	Dt	Dc	Dj	Dv	Ds	Dg	DI	Dt	Dc	Dj	Dv	Ds	Dg							
1		3		5	6	7			1	2	3	4	5							
8		10		12	13	14	6	7	8	9	10	11	12							
15		17		19	20	21														
22		24		26	27	28														
29																				

Timetable 1st Term

(as of 1st Sept 2025)



GRAU EN TECNOLOGIES INDUSTRIALS I ANÀLISI ECONÒMICA [2018] [2025-2026 Q1] Càlcul I (10) Física I (10) Programació (10, 11) Química (10, 11) Àlgebra i Geometria (10)					
Hora / Dia	Dilluns	Dimarts	Dimecres	Dijous	Divendres
08:00 - 09:00	Programació 11 (P) H 5.5 (ENG)	Programació 11 (P) H 5.5 (ENG)	Àlgebra i Geometria 10 (T) L LS.11 ALVAREZ MONTANER, JOSEP (ENG) LOPEZ SANCHA, PEDRO (ENG)		Àlgebra i Geometria 10 (T) L LS.11 ALVAREZ MONTANER, JOSEP (ENG) LOPEZ SANCHA, PEDRO (ENG)
09:00 - 10:00	Programació 11 (P) H 5.5 (ENG)	Programació 11 (P) H 5.5 (ENG)	Àlgebra i Geometria 10 (T) L LS.11 ALVAREZ MONTANER, JOSEP (ENG) LOPEZ SANCHA, PEDRO (ENG)		Àlgebra i Geometria 10 (T) L LS.11 ALVAREZ MONTANER, JOSEP (ENG) LOPEZ SANCHA, PEDRO (ENG)
10:00 - 11:00	Química 11 (L) 🧪 ALMAJANO PABLOS, MARIA PILAR (ENG) 01/12/2025 - G G-1 22.24 01/12/2025 - 0 - G G-1 22.24	Física I 10 (T) L LS.11 SEMPÀU ROMA, JOSEP (ENG) MARIN LACOMA, EDUARDO (ENG)	Càlcul I 10 (P) L LS.11 (ENG)	Física I 10 (T) L LS.11 SEMPÀU ROMA, JOSEP (ENG) MARIN LACOMA, EDUARDO (ENG)	Càlcul I 10 (T) L LS.11 (ENG)
	Química 11 (L) 🧪	Física I 10 (T) L LS.11	Càlcul I 10 (P)	Física I 10 (T) L LS.11	Càlcul I 10 (T)

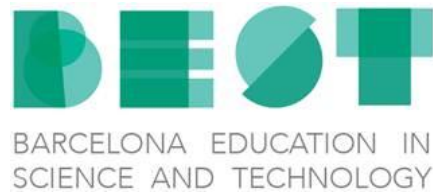
https://estudis.etseib.upc.edu/ca/timetable/1284/actual/groups?s_0=240712&s_1=240714&s_2=240715&s_3=240713&s_4=240711

Talent =

$$\left(\frac{\text{Inherited skills} + \text{Acquired skills}}{\text{time}} \right) \text{attitude}$$

(Eq. 2)

Connection with the industrial ecosystem



*Foundation **Barcelona Education in Science and Technology (BEST)**:*
*Created to promote **excellence in university education**, especially **interdisciplinary and interuniversity** collaborations, to stimulate the training of professionals with **high professional and technical training***

Collaborators:



Promoters:



Support:



www.fbest.org



Grants and scholarships programme



→ <http://fbest.org/becas/?lang=es>

Programa de becas y ayudas al estudio

Información General

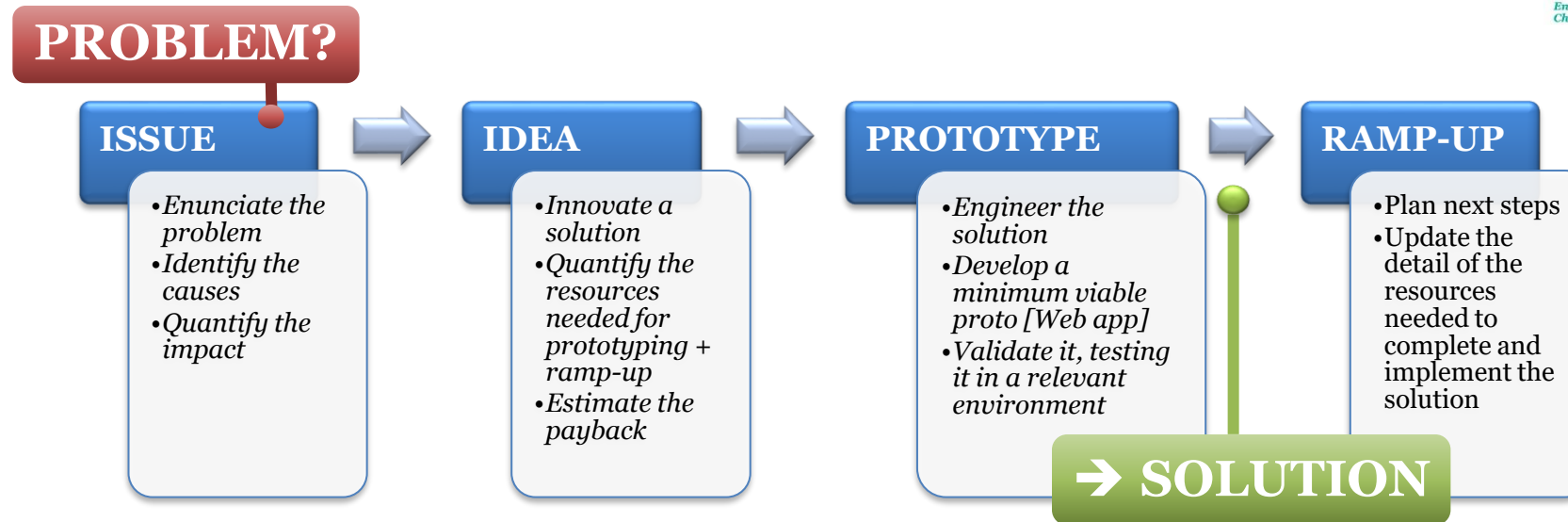
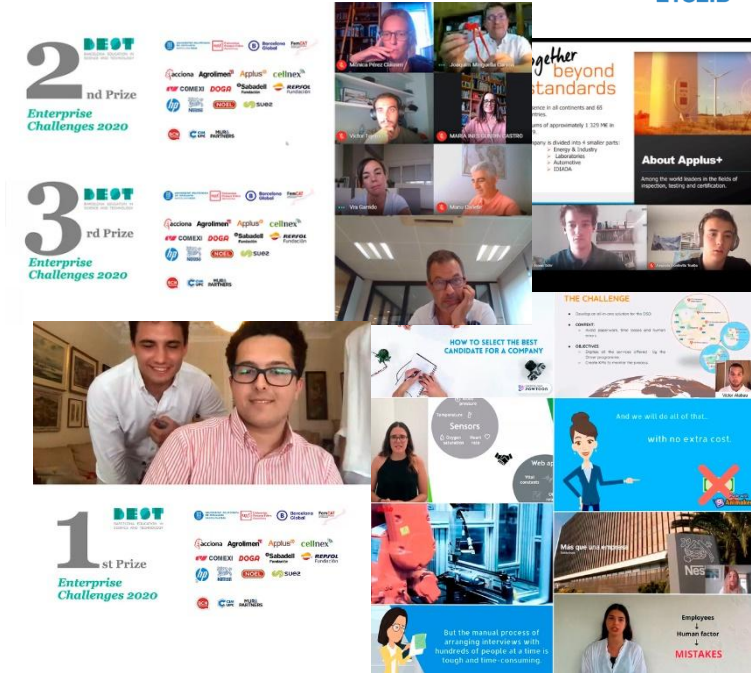
El objetivo del Programa de becas y ayudas al estudio es apoyar a personas con talento para que puedan cursar y completar con éxito sus estudios impulsados por la fundación BEST, sea cual sea su situación económica, de origen geográfico y/o sociales.

Dicho de otra manera, se pretende que la fundación BEST apoye a personas con el mejor rendimiento académico a iniciar o continuar sus estudios impulsados sin que tengan que quedar atrás por razones económicas, de origen geográfico y/o sociales.

Con estas ayudas, se desea poder atraer el mejor talento y apoyar a las personas que lo necesitan.

- a. Ayudas a los estudios
- b. Becas de movilidad
- c. Ayudas del fondo de emergencia para circunstancias sobrevenidas

“Enterprise Challenges”



“Transformational Sessions”

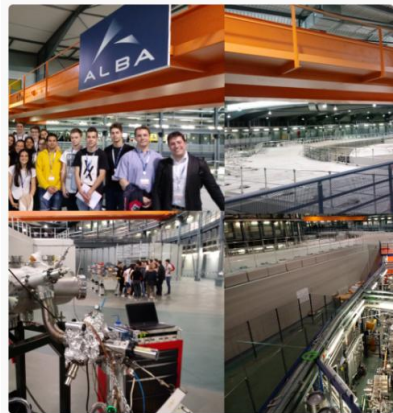


**Pavelló Mies
Van der Rohe,
(Barcelona)
03/12/2018**

**Campus Repsol, (Madrid)
30/01/2020**



**Campus Repsol,
(Madrid)
14/07/2022**



**Sincrotró ALBA, (Cerdanyola
del Vallès) 09/05/2019**



**DHUB, (Barcelona)
10/02/2022**



**Recinte Modernista
de St. Pau,
(Barcelona)
21/11/2019**

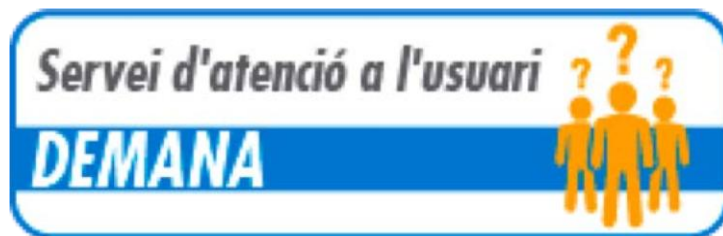


What to do in case of doubt

- ✓ Try to search the topic at the **ETSEIB website**

<https://etseib.upc.edu/>

- ✓ Dedicated service for **academic questions**



<https://demana.upc.edu/etseib>



→ The resolution of a **Ticket in Demana** is notified directly to the **@estudiantat.upc.edu** email address

Time for Questions



... and Answers!

Homework for this year:

RESPONSIBILITY

EFFORT

LANGUAGE



POSITIVITY



**Bachelor's degree in
Industrial Technologies and Economic Analysis**

Key aspects to remember from today's session: (START BY THE END)

1. ETSEIB is a **big school that will open you many doors**.
2. There is an **Initial Phase** (total of 60 ECTS) that grants permanence.
3. **First term** is “soft landing” at ETSEIB. **Second term** UPC & UPF.
4. **UPC-ETSEIB** is the **coordinating entity** and holds your files (relevant for mobility and internships).
5. Check “each” **day-to-day information** at “each” university.
6. University is not only teaching and exams: **Come and live it!**

Congratulations for being here. Now this is for real.

Believe you can and you're halfway there

T. Roosevelt

