

Master in Biomedical Engineering

UB-UPC 2024-2025

www.upc.edu/masters-sessions



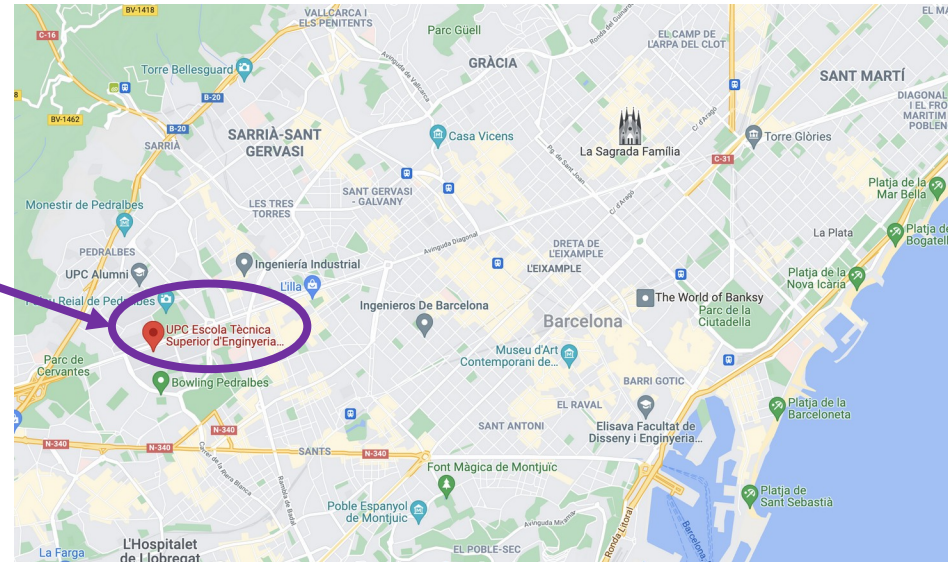
UNIVERSITAT POLITÈCNICA
DE CATALUNYA
BARCELONATECH



Register
to the information
sessions

Now, UPC masters degrees!





ETSEIB: Escola Tècnica Superior d'Enginyeria Industrial de Barcelona

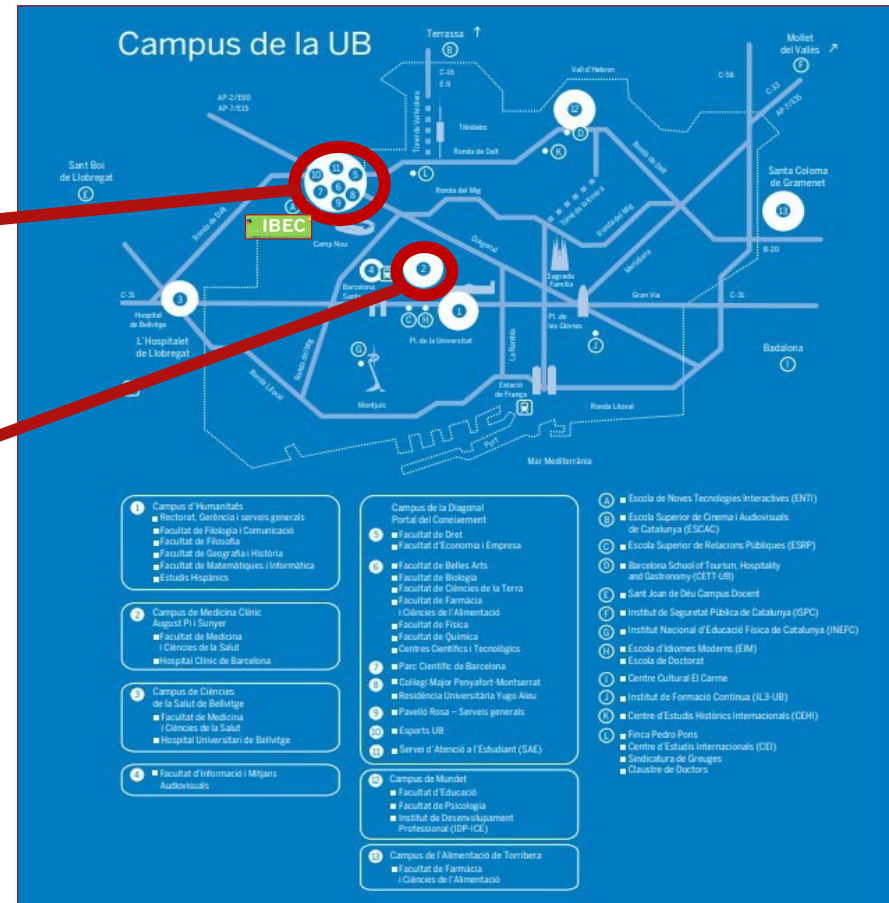
Over 170 years of educating professionals with a very strong scientific and technical foundation



<https://etseib.upc.edu/>

Faculty of Chemistry and Physics Faculty of Medicine and Health sciences

molt+
a l'ETSEIB
MÀSTERS



www.upc.edu/masters-sessions
 Register for the information sessions
Now, UPC masters degrees!



UNIVERSITAT POLITÈCNICA
DE CATALUNYA
BARCELONATECH

29.812	3.523	2.074	65	84	45
estudiants	PDI	PAS	graus	màsters	programes de doctorat
18	275	19	348 M	72,7 M	70.151
centres docents	programes de formació permanent	patents el darrer any	pressupost 2023	ingressos per R+D+I (2021)	Alumni



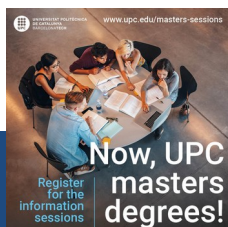
16	Departments
2	Institutes
2	Bachelor degrees (GETI, GETIAE)
15	Master's programs
3379	Students
446	Teaching and Research Staff (PDI)
126	Administrative and Support Staff (PAS)



ETSEIB Master's degree programmes



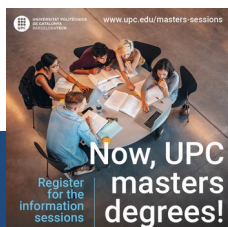
1. **Master's degree in Neuroengineering and Rehabilitation (with UAB)**
2. **Master's degree in Biomedical Engineering (with UB)**
3. **Master's degree in Automatic Control and Robotics**
4. **Master's degree in Automotive Engineering**
5. **Master's degree in Management Engineering**
6. **Master in Nuclear Engineering / EMINE**
7. **Master in Electric Power Systems and Drives**
8. **Master in Thermal Engineering / DENSYS**
9. **Master in Energy Engineering / MSc Programmes in Energy InnoEnergy**



How to apply

<https://www.ub.edu/portal/web/fisica-es/masteres-universitarios/-/ensenyament/detallEnsenyament/10243501/4>

- **Application**
Deadline: 21 of June 2024
- **Acceptance (Academic Comission)**
July 2024
- **Provisional listing of accepted students**
July 2024
- **Students' acceptance**
Up to 7 days from the publication of the listing
- **Definitive listing of accepted students**
July 2024
- **Enrolment**
Check information at UB website



How to apply



<https://www.ub.edu/portal/web/fisica-es/masteres-universitarios/-/ensenyament/detallEnsenyament/10243501/4>

Required documentation

- Pre-enrolment application
- Photocopy of degree certificate or equivalent qualification. In case of admission, foreign degrees that require so should be translated and authenticated through diplomatic channels before completing the enrolment.
- Other specific documentation related to the selection criteria

Selection criteria

Of the qualifications that grant access to the master's programme the following give priority access:

1. Bachelor's degree in Biomedical Engineering.
2. Engineering degree courses, bachelor's degrees and pre-EHEA degrees in physics.
3. Bachelor's degrees and pre-EHEA degrees of different fields.

Holders of degrees in other subject areas should seek specific authorization from the Coordination Committee.

Resolution of admissions takes into account the individual profile of each applicant. The Coordination Committee considers each application on the basis of the following merits:

- a) Degree qualification and academic record (80%).
- b) Professional experience (15%).
- c) Accredited English language skills at level B1 or equivalent (5%).

Professional experience must be accredited, especially in the case of experience in research centres, hospitals and industrial roles related to the field of bioengineering.

Bridging courses, with a study load of thirty credits, will be assigned on the basis of each student's specific academic profile and experience.

Notifications relating to the admission process will be sent by email and standard mail. These will specify the documentation required to complete registration and the procedure to be followed, especially for students from abroad.

Automatrícula

CASTELLANO - ENGLISH

Es fa mitjançant l'aplicació d'automatrícula (matrícula, registration).

[calendar](#)

Els estudiants de nou accés han d'haver fet prèviament la preinscripció i han d'haver estat acceptats en el màster corresponent.

Alumnes nous amb estudis espanyols o estudis estrangers homologats a Espanya

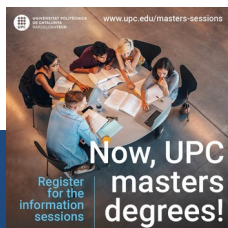
Uns dies abans del període de matrícula, han d'enviar al correu electrònic postgrau.fisica@ub.edu la documentació que es relaciona a continuació:

1. DNI.
2. Títol o certificat substitutori del títol. En el cas de titulats per la UB, n'hi ha prou amb un expedient acadèmic on consti que s'han abonat els drets d'expedició del títol.
3. Els estudiants que inicien estudis de màster a la UB provinents d'altres universitats i sol·liciten beca general: certificat acadèmic personal dels estudis que els han donat accés al màster. En el cas d'estudis cursats a l'estranger, també la traducció jurada del certificat acadèmic personal i la declaració d'equivalència de nota mitjana emesa pel Ministeri d'Educació, Cultura i Esport.
4. Altres documents acadèmics que afecten la matrícula (família nombrosa, discapacitat, etc.).
Més informació: consulteu l'apartat «Matrícula exempta o bonificada» en la pàgina [Modalitats de matrícula](#).

Una vegada revisada i validada aquesta documentació, s'autoritza l'entrada a l'aplicació d'automatrícula. Si cal, es demanarà presentar la documentació original en paper.



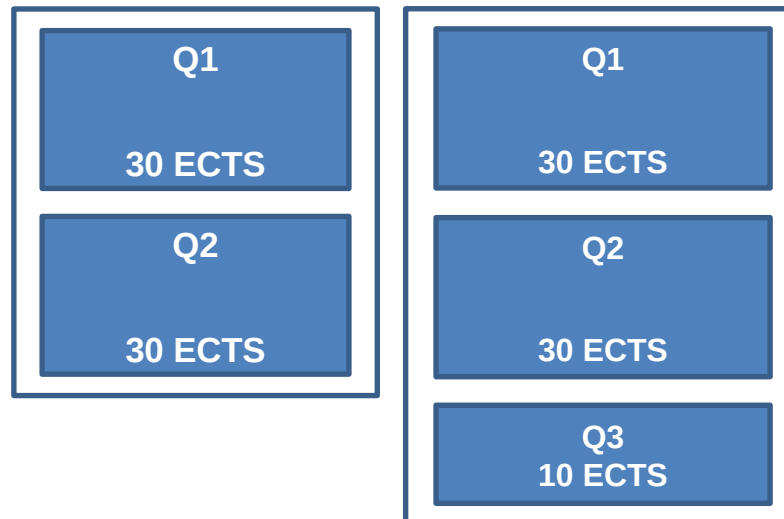
Master in Biomedical Engineering



Master in Biomedical Engineering

- **Face-to-face Master**
- **Bridge courses (12-30 ECTS)**

- **60 ECTS**
- **50 new students**
- **Afternoon classes**



OB: 15 ECTS
OPT: 35 ECTS
TFM: 10 ECTS

(+10 ECTS CF)

If bridge courses are
necessary



■ **Objective:** offer postgraduate training in:

- Design, manufacture, evaluation, marketing, installation and maintenance in relation to **health services and products**, and the operation of medical equipment.
- Preparation for **research** in a particular field of biomedical engineering.

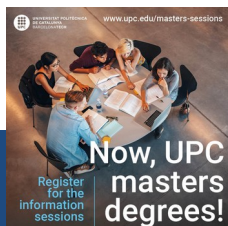
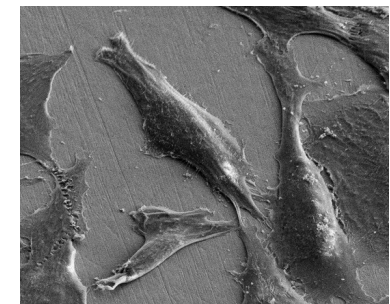
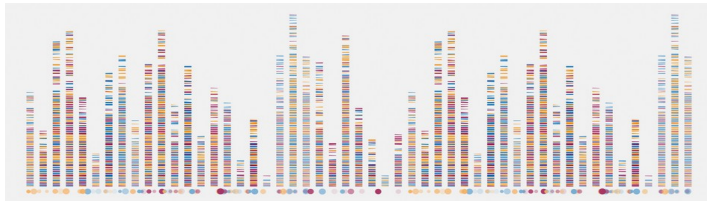
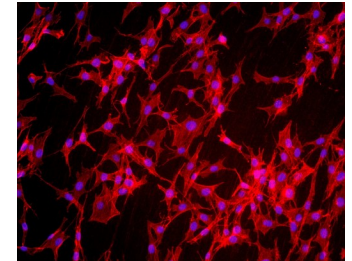
■ **Competences:**

- **Original thinking** in the development or application of ideas, in a research context
- Apply the acquired knowledge to problem-solving in **multidisciplinary** contexts
- Tackle the **complexity** of formulating judgements based on incomplete or limited information, taking in consideration the associated **social and ethical responsibilities**
- **Communicate** knowledge and conclusions to specialists and non-specialists in a clear and unambiguous manner
- Capacity for on-going self-directed and **independent learning**



Master in Biomedical Engineering

- **Bioelectronics & Nanobioengineering (12.5 ECTS)**
- **Biomechanics & Biomaterials (12.5 ECTS)**
- **Biomedical Technologies (37.5 ECTS)**
- **Signals & Biomedical Images (32.5 ECTS)**



ETSEIB

Escola Tècnica Superior
d'Enginyeria Industrial de Barcelona

**Escola de referència:
Formació i recerca
de màxim nivell
científic i tecnològic.**



**Thank you for
your attention**

jordi.fonollosa.m@upc.edu

