



UNIVERSITAT POLITÈCNICA
DE CATALUNYA
BARCELONATECH

UPC Virtual Postgraduate Fair

From 3 to 7 March



UNIVERSITAT POLITÈCNICA
DE CATALUNYA
BARCELONATECH

UPC Virtual Postgraduate Fair

**Master's degree in
Biomedical Engineering**



UNIVERSITAT POLITÈCNICA
DE CATALUNYA
BARCELONATECH

The UPC



Bachelor's
degree students

25,289

Master's degree
students

6,038

Bachelor's and master's degree
graduates

6,556

Doctoral
candidates

2,189

Continuing
education
programmes

141

Teaching and
research staff

3,677

Agreements with companies and
research projects

1,801

54 %

of doctoral degree
students

28 %

of master's
degree students
are international

1,555

student exchange
agreements
with 695 universities

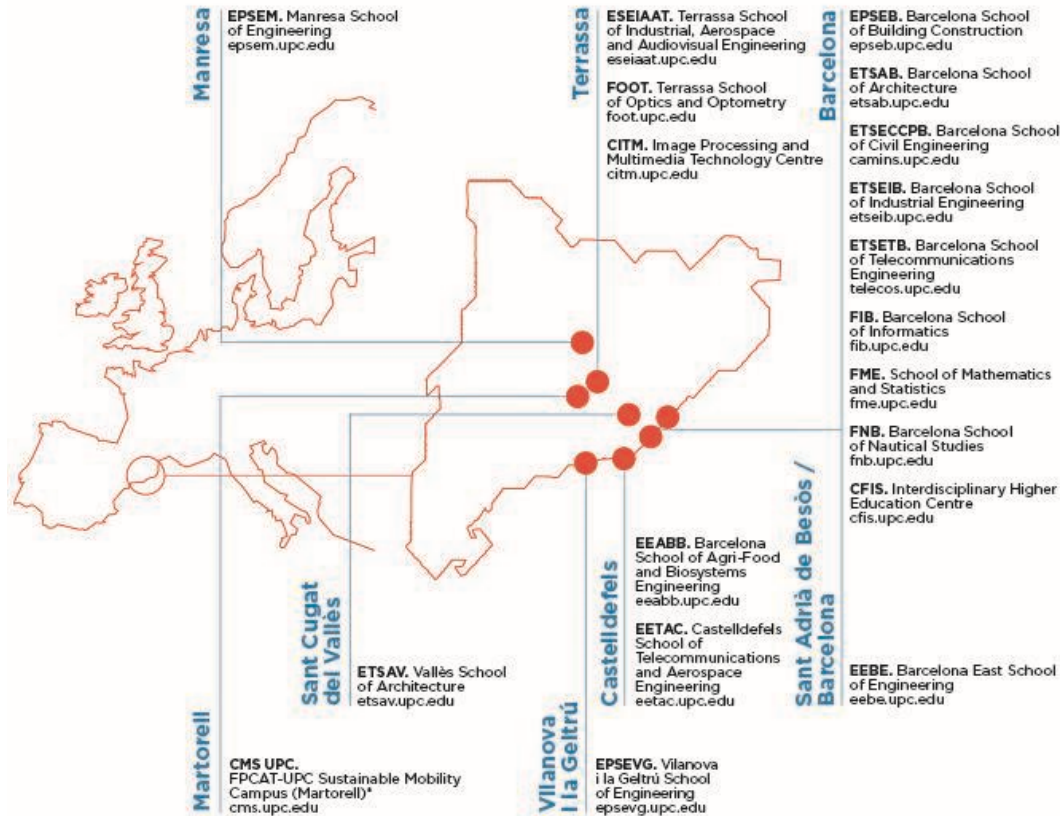
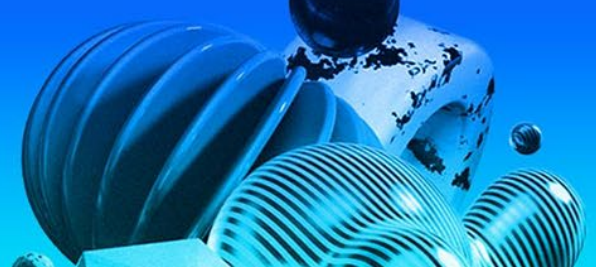
2,143

Technical, management,
administrative and service staff



UNIVERSITAT POLITÈCNICA
DE CATALUNYA
BARCELONATECH

The UPC



* Campus for initial vocational and continuing education in automotive engineering, sustainable mobility and advanced industry.

Campuses

9

Schools

18

Master's degrees

96

Master's degree in English

50

Doctoral programmes

46

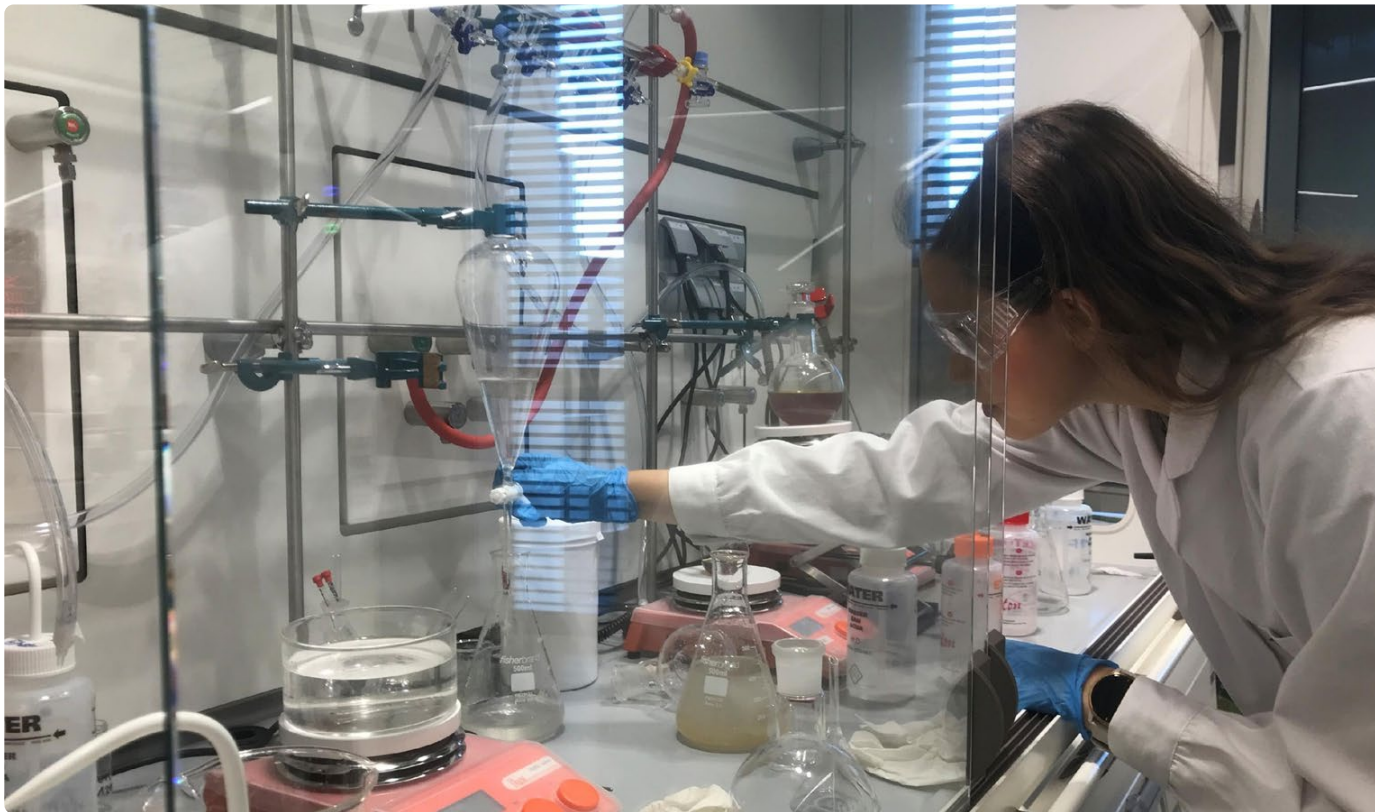
54

international double degree agreements with 11 countries



UNIVERSITAT POLITÈCNICA
DE CATALUNYA
BARCELONATECH

The UPC



94 %

graduate
employment

94 %

have full-time jobs

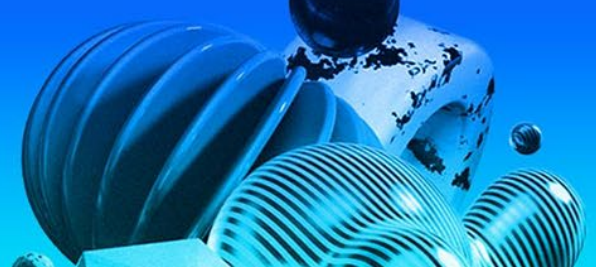
93 %

graduate
employment
In less
than 6 months



UNIVERSITAT POLITÈCNICA
DE CATALUNYA
BARCELONATECH

Much more than studying



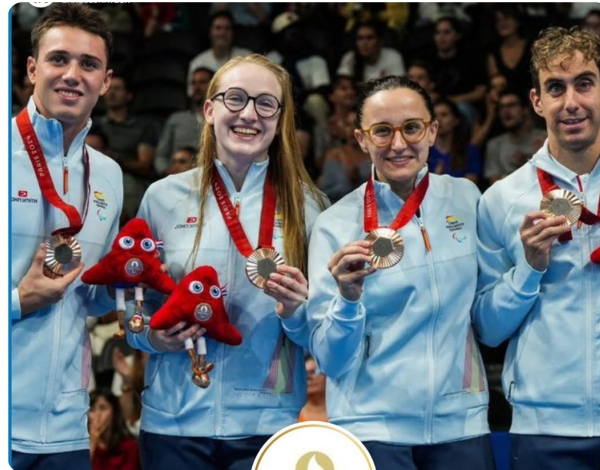
**Students
associations**

**Cooperation
projects**

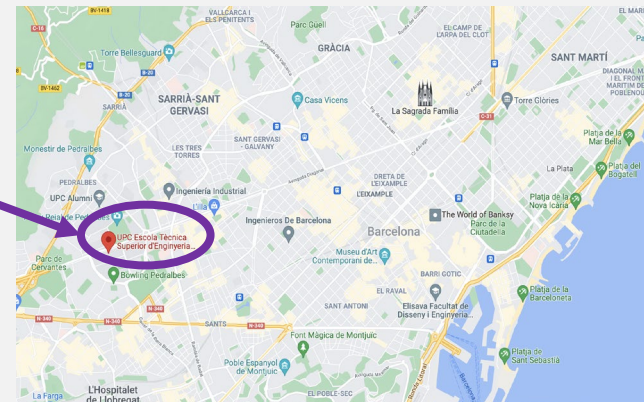
**Awards and
competitions**

Sports

**Cultural
activities**



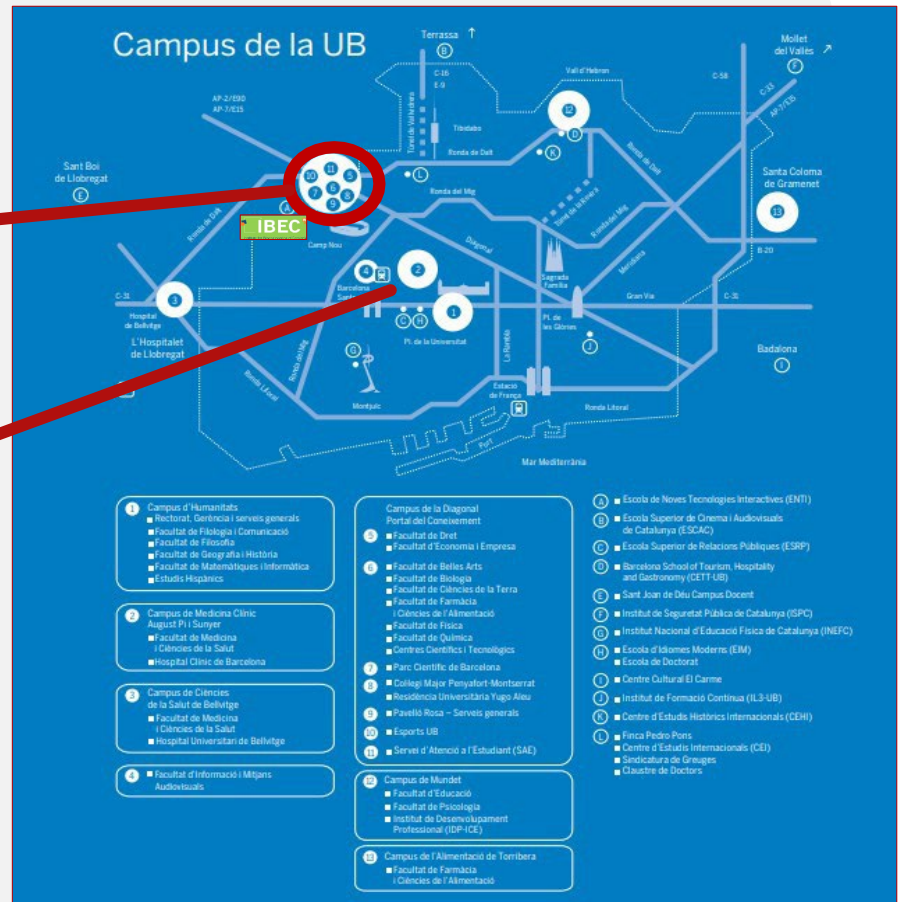
Master's degree in Biomedical Engineering



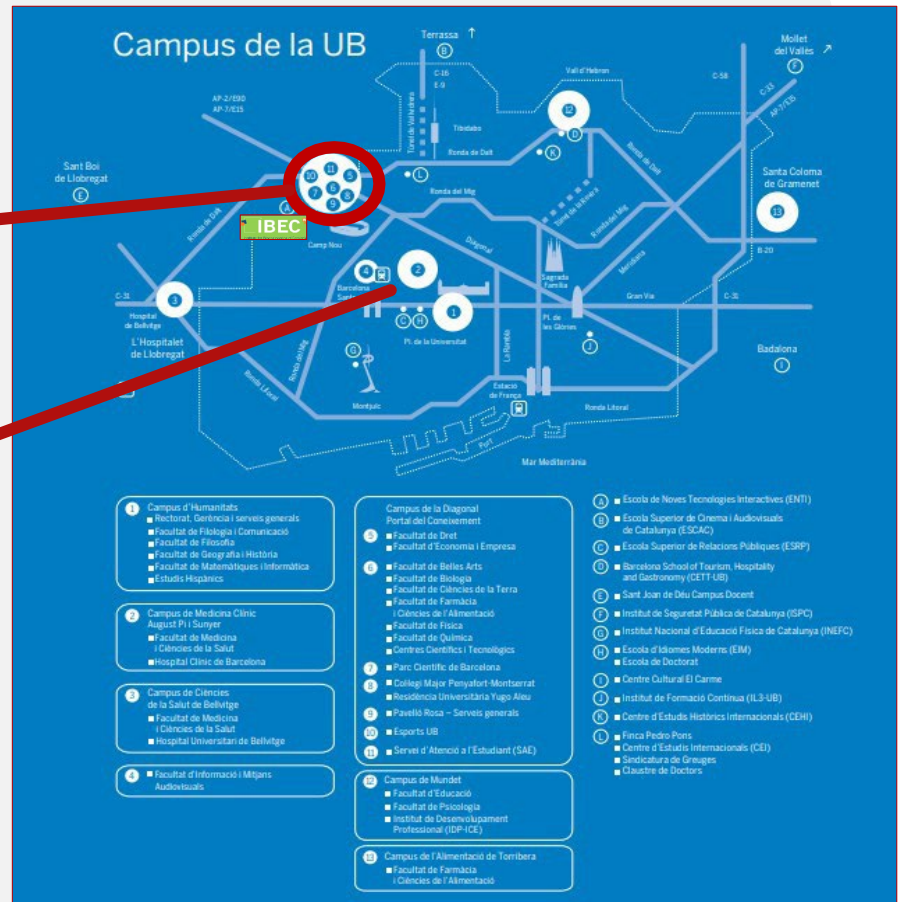
ETSEIB: Escola Tècnica Superior d'Enginyeria Industrial de Barcelona

Over 170 years of educating professionals with a very strong scientific and technical foundation

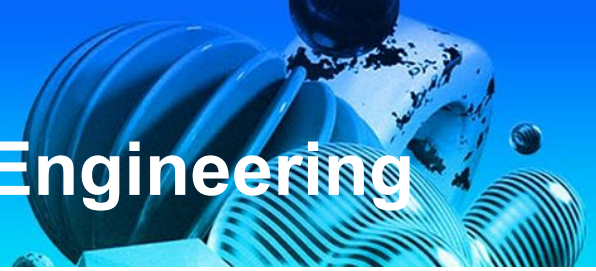
Master's degree in Biomedical Engineering



Master's degree in Biomedical Engineering



Master's degree in Biomedical Engineering



- **Application**
Deadline: 21 of June 2024
- **Acceptance (Academic Commission)**
July 2024
- **Provisional listing of accepted students**
July 2024
- **Students' acceptance**
Up to 7 days from the publication of the listing
- **Definitive listing of accepted students**
July 2024
- **Enrolment**
Check information at UB website

<https://web.ub.edu/en/web/estudis/w/masterdegree-m010d?referer=masters-postgraduate-ddegrees-finder>

Master's degree in Biomedical Engineering

- **Pre-enrolment fee:** A pre-enrolment fee of 30,21 euros is charged. Students who apply to more than one master's degree must pay the fee for each pre-enrolment request. Pre-enrolment requests cannot be processed until this fee has been paid. Fees will only be refunded if the master's degree in question is suspended.
- **Reserved places:** A maximum of 5% of the new places of the master's degree are reserved for students who meet the general and specific access requirements and accredit the recognition of a degree of disability equal to or greater than 33%.

Students who apply to the official master's degree at the Faculty of Physics will have to provide the following documentation:

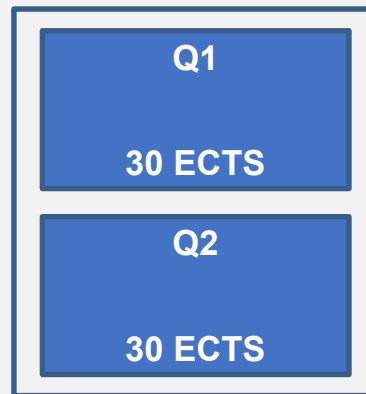
- DNI or passport
- Curriculum Vitae
- Academic transcript (teaching from the UB) or Official Academic Certificate (teaching from other universities)
- Bachelor's degree or receipt as payment fees have been paid for students of Spanish universities. Students from foreign universities must provide the Degree or its substitute certificate and, if the studies come from countries that do not belong to the EHEA, it must be apostilled/legalized (depending on whether the country of origin belongs to the Hague Convention or not)*

<https://web.ub.edu/en/web/estudis/w/masterdegree-m010d?referer=masters-postgraduate-ddegrees-finder>

Master's degree in Biomedical Engineering

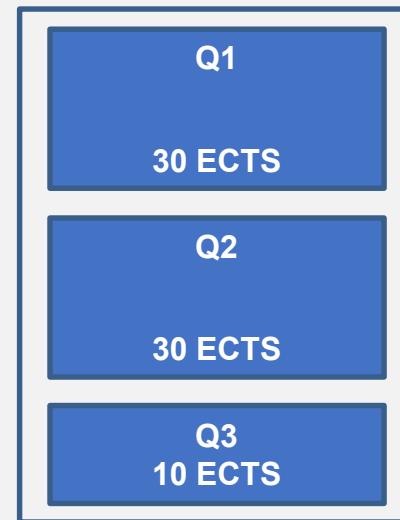
- **Face-to-face Master**
- **Bridge courses (12 ECTS)**

- **60 ECTS**
- **50 new students**
- **Afternoon classes**



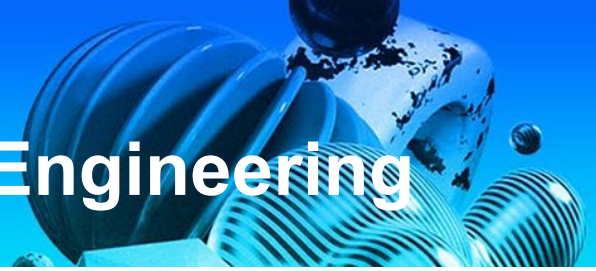
OB: 15 ECTS
OPT: 35 ECTS
TFM: 10 ECTS

(+10 ECTS CF)



If bridge courses are
necessary

Master's degree in Biomedical Engineering

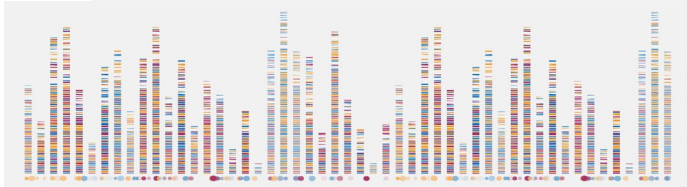
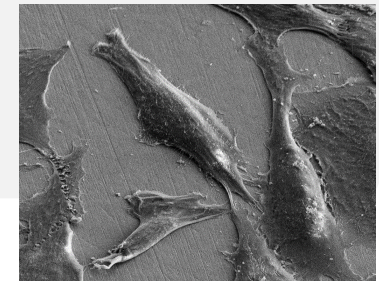
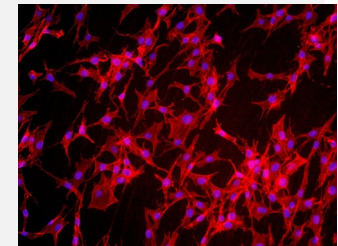


- **Objective:** offer postgraduate training in:
 - Design, manufacture, evaluation, marketing, installation and maintenance in relation to **health services and products**, and the operation of medical equipment.
 - Preparation for **research** in a particular field of biomedical engineering.

- **Competences:**
 - **Original thinking** in the development or application of ideas, in a research context
 - Apply the acquired knowledge to problem-solving in **multidisciplinary** contexts
 - Tackle the **complexity** of formulating judgements based on incomplete or limited information, taking in consideration the associated **social and ethical responsibilities**
 - **Communicate** knowledge and conclusions to specialists and non-specialists in a clear and unambiguous manner
 - Capacity for on-going self-directed and **independent learning**

Master's degree in Biomedical Engineering

- **Bioelectronics & Nanobioengineering (12.5 ECTS)**
- **Biomechanics & Biomaterials (12.5 ECTS)**
- **Biomedical Technologies (37.5 ECTS)**
- **Signals & Biomedical Images (32.5 ECTS)**





UNIVERSITAT POLITÈCNICA
DE CATALUNYA
BARCELONATECH

Master's degree in Biomedical Engineering

**Thank you for your
attention**

jordi.fonollosa.m@upc.edu

